



KEY FEATURES

- Beautifully landscaped grounds with irrigation and walking trail
- Ample parking – covered and surface lot
- 24/7 Security
- First floor available for lease: ±7,195 SF
- Second floor available for lease: ±15,000 SF
- Third floor available for lease: ±8,213 SF
- Fourth floor available for lease ±15,000 SF
- \$15.50 PSF Full Service
- Furniture, fixtures, and equipment negotiable

LEARN MORE ABOUT THIS PROPERTY

JEFF ANDREWS, SIOR

Jeff@CommercialRealtyNC.com

336.793.0890, ext 103

OFFICE

FOR LEASE

MADISON PARK

5650 University Parkway

Winston Salem, NC 27105

Madison Park consists of 7 office buildings in a park like setting just minutes from Downtown Winston-Salem, with a beautifully landscaped grounds and walking trail.

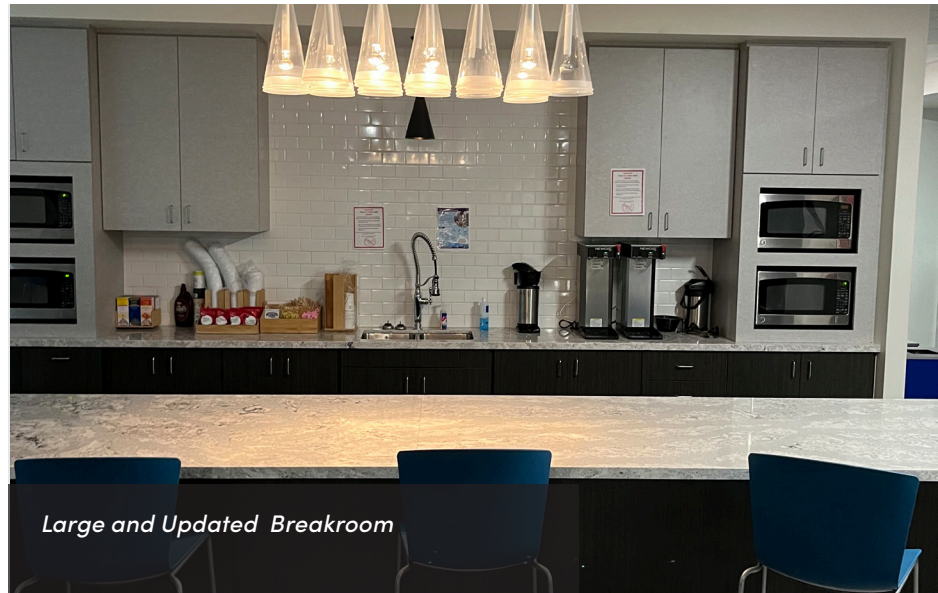




Large Open Work Space



*Covered Parking Garage
Additional Surface Parking*



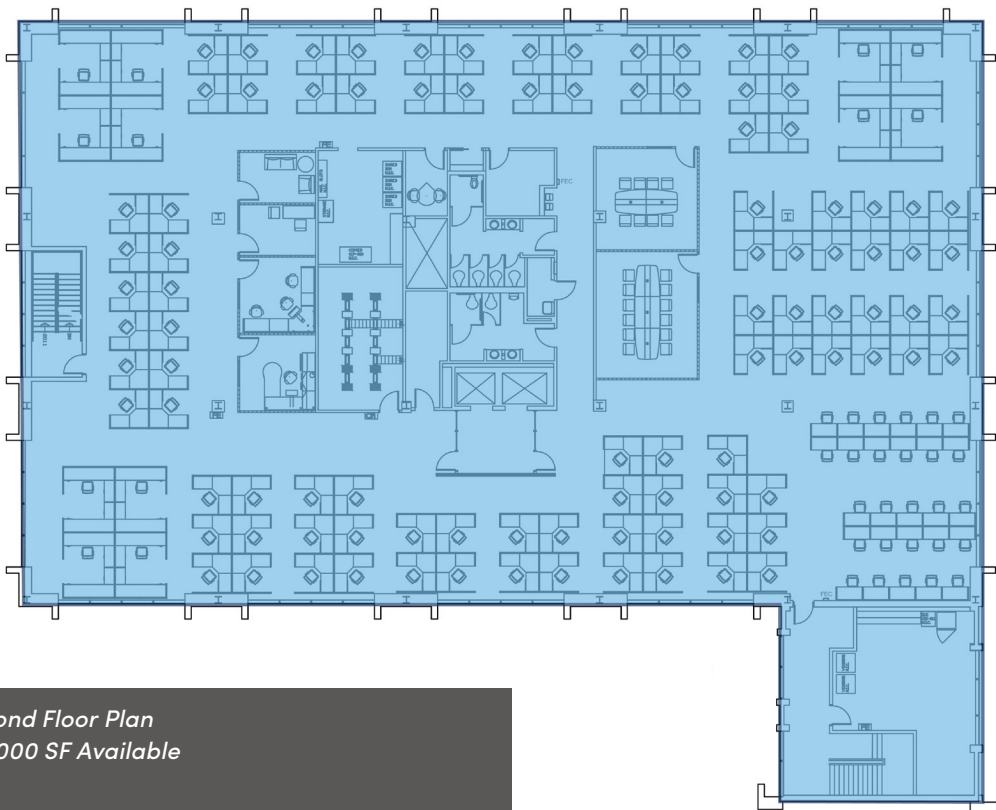
Large and Updated Breakroom



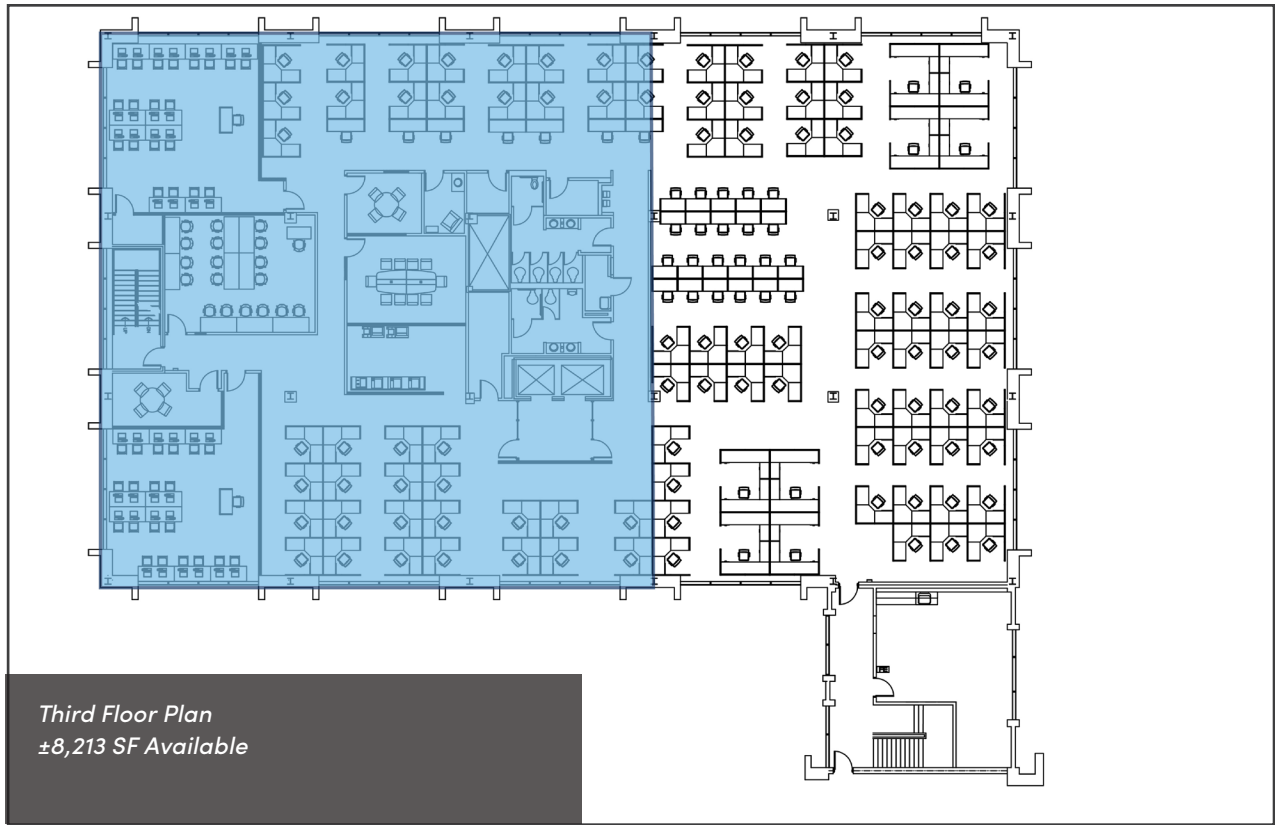
Spacious Conference - Training Room



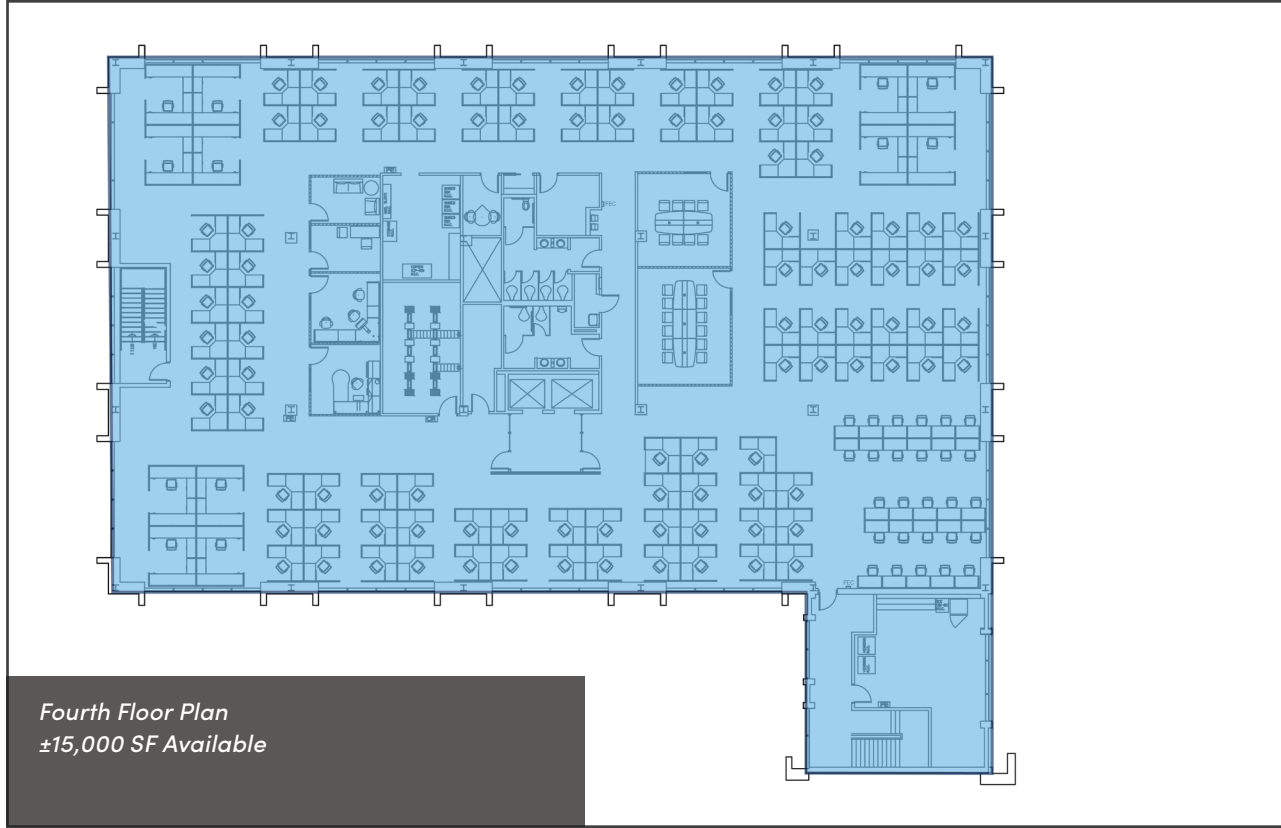
First Floor Plan
 ±7,195 SF Available



Second Floor Plan
 ±15,000 SF Available



Third Floor Plan
±8,213 SF Available



Fourth Floor Plan
±15,000 SF Available

OFFICE

FOR LEASE



DEMOGRAPHICS

	1 MILE	3 MILES	5 MILES
TOTAL POPULATION:	3,631	43,590	97,825
MEDIAN HOUSEHOLD INCOME:	\$29,193	\$35,737	\$42,940
NUMBER OF HOUSEHOLDS:	1,563	16,922	38,054

SOURCE: ESRI 2021



LOCATION FEATURES

- Madison Park is just minutes from Downtown Winston-Salem
- Excellent access to US-52
- Ample nearby amenities including shopping, restaurants, and banking facilities