



## KEY FEATURES

- ±7,078 RSF Available - Suite 105
- ±4,112 RSF Available - Suite 102
- ±5,757 RSF Available - Suite 206
- Business campus environment
- State of the art energy management system
- Beautiful landscaping, professionally maintained
- Less than 1 mile to I-40, Hanes Mall and Silas Creek Parkway

OFFICE

FOR LEASE | \$16.50 PSF FS

# CONSOLIDATED CENTER I

3330 Healy Drive

Winston Salem, NC 27103

Consolidated Center is a professional office development conveniently located less than 1 mile from I-40, Hanes Mall & Silas Creek Parkway, and only 25 miles to Piedmont Triad International Airport. The property features a business campus environment, beautiful landscaping, and a common courtyard with ample seating surrounded by trees and shrubbery.

Consolidated Center I, 3330 Healy Drive, features a state of the art energy management system, newly renovated interior and exterior and access to fiber optics.

## LEARN MORE ABOUT THIS PROPERTY

### JEFF ANDREWS

Jeff@commercialrealtync.com

336.793.0890, ext 103

### STEVE VALLOS

Steve@commercialrealtync.com

336.793.0890, ext 105





## CONSOLIDATED CENTER I

### LOCATION

<b>Address</b>	3330 Healy Drive	<b>City</b>	Winston-Salem	<b>State</b>	NC
<b>Zip</b>	27103	<b>County</b>	Forsyth	<b>Year Built</b>	1983

### PROPERTY DETAILS

<b>Property Type</b>	Office / Medical Office	<b>Building SF ±</b>	37,451	<b>Available SF ±</b>	16,947
<b>Floors</b>	2	<b>Elevator</b>	Yes	<b>Building Exterior</b>	Brick/Glass

### UTILITIES

<b>Electrical</b>	Duke Energy	<b>Sewer</b>	City of Winston Salem	<b>Heat</b>	Yes
<b>Water</b>	City of Winston Salem	<b>Air</b>	Yes	<b>Gas</b>	

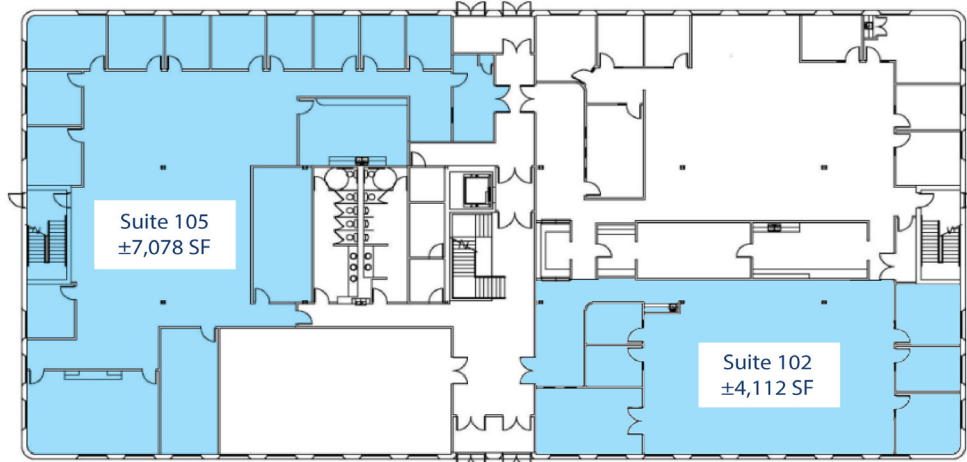


SUITE 105 - ±7,078 SF

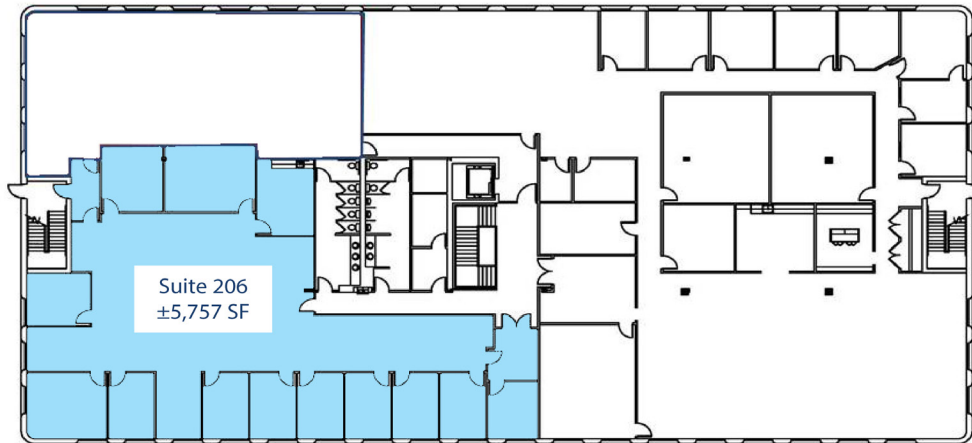
SUITE 102 - ±4,112 SF

SUITE 206 - ±5,757 SF

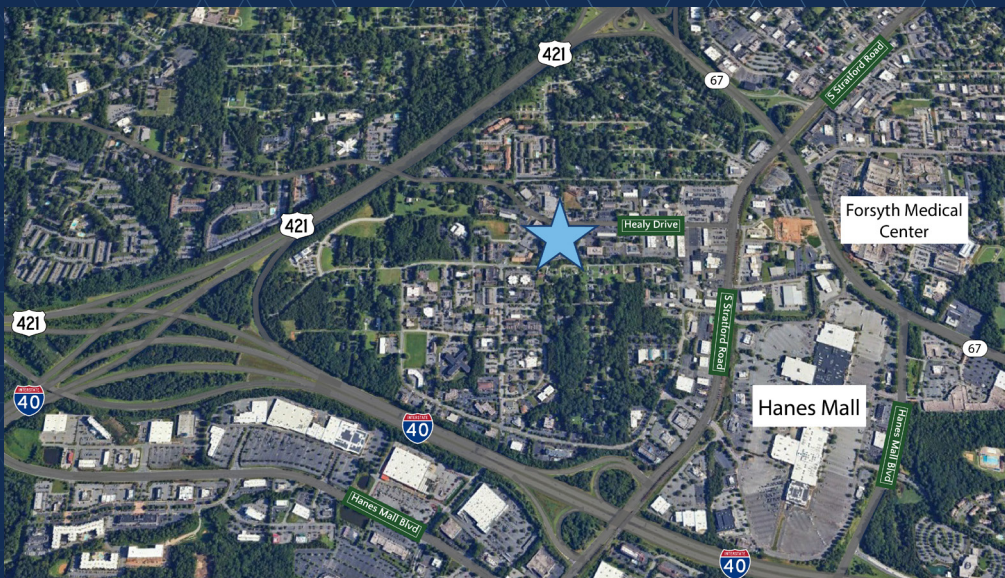
FOR LEASE | \$16.50 PSF FS



FIRST FLOOR



SECOND FLOOR



### KEY FEATURES:

- 1 mile to Hanes Mall
- 1.2 miles to Forsyth Medical Center
- 1 mile to I-40