



KEY FEATURES

- ±1,559 RSF - Suite 110
- ±2,005 RSF - Suite 130
- ±13,572 RSF - Second Floor (Can be Demised)
- Business campus environment
- Ample Parking
- Beautiful landscaping, professionally maintained
- Less than 1 mile to I-40, Hanes Mall and Silas Creek Parkway
- 25 miles to Piedmont Triad Internal Airport

OFFICE

FOR LEASE | \$16.50 PSF

CONSOLIDATED CENTER IV

1399 Ashleybrook Lane,
Winston Salem, NC 27103

Consolidated Center is a professional office development conveniently located less than 1 mile from I-40, Hanes Mall & Silas Creek Parkway, and only 25 miles to Piedmont Triad International Airport. The property features a business campus environment, beautiful landscaping, and a common courtyard with ample seating surrounded by trees and shrubbery.

Consolidated Center IV, 1399 Ashleybrook Lane, features a state of the art energy management system, newly renovated interior and exterior as well as access to fiber optics.

LEARN MORE ABOUT THIS PROPERTY

JEFF ANDREWS

Jeff@commercialrealtync.com

336.793.0890, ext 103

STEVE VALLOS

Steve@commercialrealtync.com

336.793.0890, ext 105





CONSOLIDATED CENTER IV

LOCATION

Address	1399 Ashleybrook Lane	City	Winston-Salem	State	NC
Zip	27103	County	Forsyth	Year Built	1990

PROPERTY DETAILS

Property Type	Office / Medical Office	Building SF ±	26,960	Available SF ±	1,559 - 17,136
Floors	2	Elevator	Yes	Building Exterior	Brick/Glass

UTILITIES

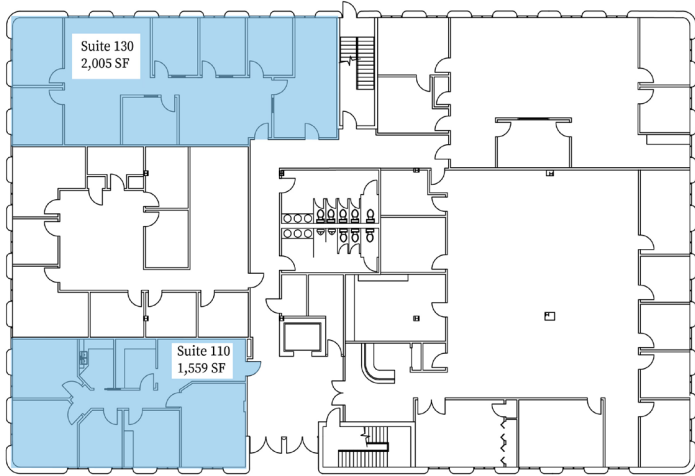
Electrical	Duke Energy	Sewer	City of Winston Salem	Heat	Yes
Water	City of Winston Salem	Air	Yes		



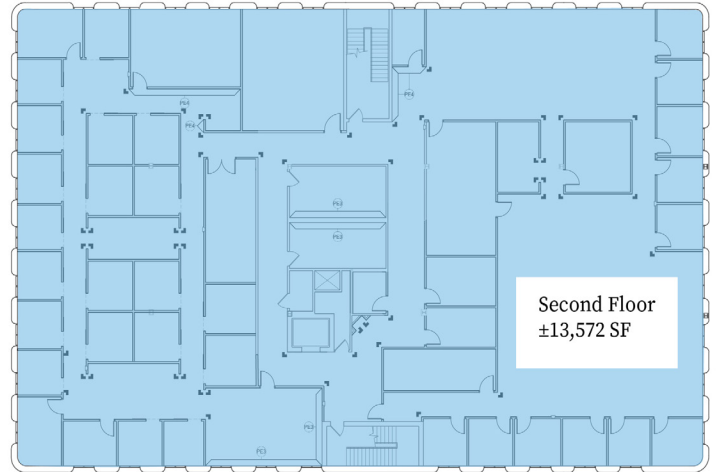
±1,559 RSF OR ±2,005 RSF AVAILABLE - 1ST FLOOR

±13,572 RSF AVAILABLE - 2ND FLOOR

FOR LEASE | \$16.50 PSF



1ST FLOOR



2ND FLOOR
(CAN BE DEMISED)

