

## KEY FEATURES

- Class A Office
- Premier First-Floor Space
- ±Parking ratio in excess of 4.3 spaces per 1,000 RSF
- On-site amenities include: Property Management, Coffee Shop and Women's Apparel
- Prime Location off Stratford Road with easy access to shopping, banks, restaurants, Salem Parkway, and Highway 52
- Suite 100 - ±4,916 RSF

CLASS A OFFICE SUITES

FOR LEASE

# 110 OAKWOOD DRIVE

Suite 100

Winston-Salem, NC 27103



## LEARN MORE ABOUT THIS PROPERTY

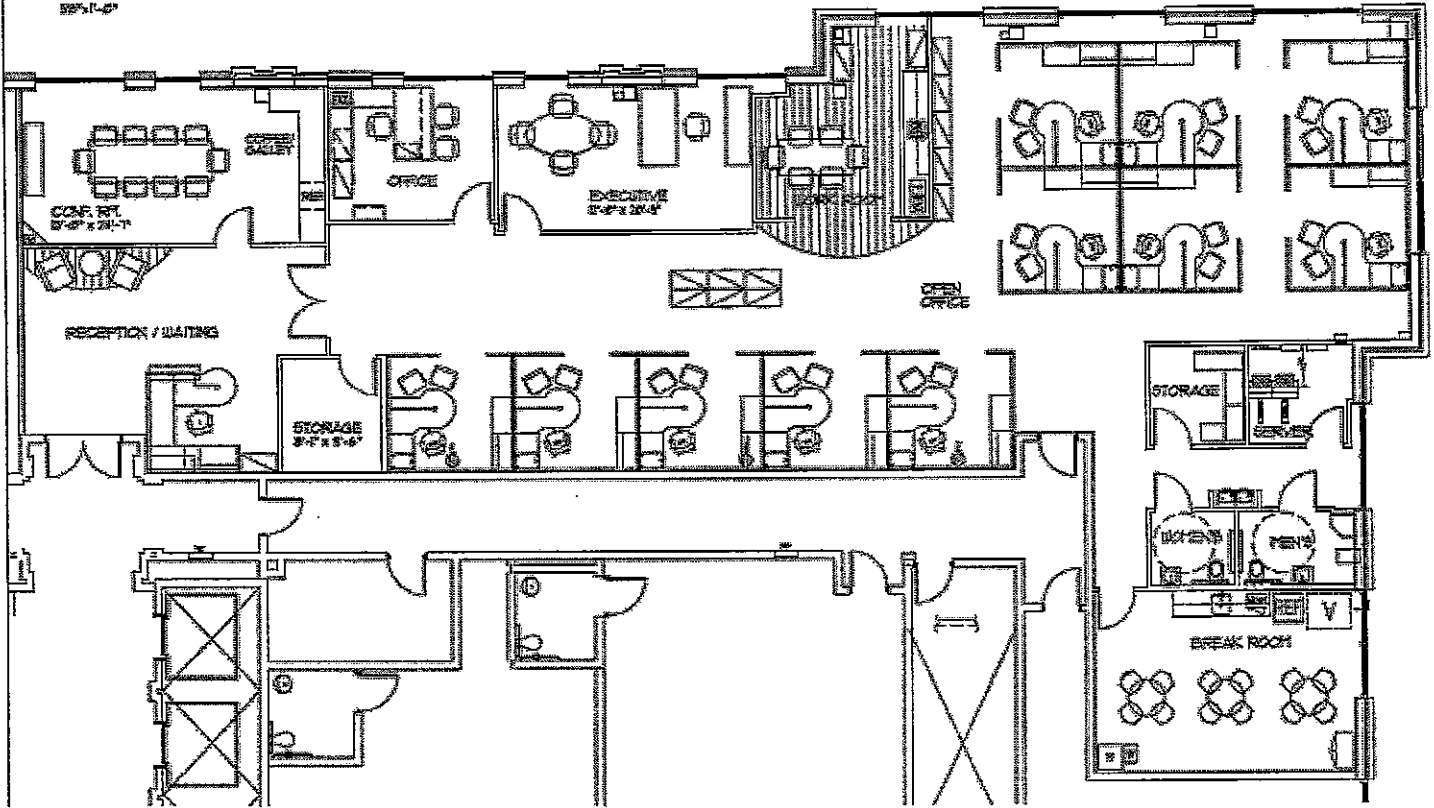
### JEFF ANDREWS

Jeff@CommercialRealtyNC.com  
336.793.0890, ext 103

# OAKWOOD BUILDING

PROSPECT: "INMAR"  
 PROPOSED SPACE PLAN  
 RELEASE DATE: 2/10/2008  
 8:54:42

(SPACE PLAN)



## LOCATION

Address	110 Oakwood Drive		
City	Winston-Salem	Zip	27103
County	Forsyth		

## PROPERTY DETAILS

Property Type	Class A Office	Acres ±	5.77	Avail SF ±	4,916
Restrooms	14	Parking ±	475	SF Per Floor ±	22,770
Floors	5	Roof	Membrane	Building SF ±	113,850
Elevators ±	3	Flooring	Marble/Carpet	Year Built	2001
Sprinklered	Yes				

## UTILITIES

Electrical	Duke Energy	Sewer	City of WS	Heat	Central
Water	City of WS	Air	Central		

## TAX INFORMATION

Zoning	GO
--------	----

## PRICING & TERMS

Lease Rt/SF ±	\$23.50	Lease Type	Full Service
---------------	---------	------------	--------------